



LT  
LT



PORT NOLA  
THE PORT OF NEW ORLEANS

GO BEAM 75 LT  
EADER 65 LT



W 75 LT  
DOOSAN

2023

# SUSTAINABILITY ACTION REPORT



PORTS AMERICA

### *Purpose of this report*

*Our inaugural Sustainability Action Report aims to provide our key stakeholders, including our employees, customers, suppliers, investors and partners, with an overview of our approach to sustainability at Ports America as we continue to develop our broader Sustainability Strategy, underpinned by a robust materiality assessment.*

*In this report we highlight our key sustainability initiatives in 2023 with a focus on safety, environmental and corporate social responsibility initiatives. In our next Sustainability Report, we will aim to provide a more comprehensive view of our sustainability vision, strategy and efforts across the organization. We believe that sustainability is a collective and iterative journey, and we are committed to working collaboratively with all our stakeholders to continue to drive positive change.*

*By sharing these insights, we hope to demonstrate our ambition to build a more resilient, efficient, and sustainable company and industry.*

### *Legal Disclaimer*

The information and opinions contained in this report are provided as of the date they are made and are subject to change without notice. Ports America disclaims any obligation or undertaking to update or revise any such statements. This report represents current Ports America policy and intent and is not intended to create legal rights or obligations. This report may contain or incorporate by reference public information not separately reviewed, approved, or endorsed by Ports America, and no representation, warranty, or undertaking is made by Ports America as to the accuracy, reasonableness, completeness, fitness for a particular purpose, or non-infringement of such information. The information contained on or accessible through the websites or social media accounts referred to in this report is not incorporated by reference in, or otherwise a part of, this report, and any references to these websites or social media accounts are intended to be inactive textual references only.

This report contains forward-looking statements. All statements, other than statements of historical or current facts, including statements regarding our plans, initiatives, projections, goals, commitments, expectations, or prospects, are forward-looking. These forward-looking statements are inherently uncertain and difficult to predict. We may have used words, such as aim, anticipate, progress, believe, commit, drive, estimate, ensure, expect, goal, intend, may, mission, plan, project, seek, strategy, strive, deliver, evolve, develop, long-term, outlook, target, and will or similar expressions to identify forward-looking statements.

These forward-looking statements are based on the current expectations and assumptions regarding anticipated developments and other factors affecting Ports America. Actual results and outcomes could differ materially for a variety of reasons, including, but not limited to the following: assumptions not being realized; economic, social, and political risks and natural disasters; financial risks; scientific or technological developments; evolving sustainability strategies; changes in carbon markets; evolving government regulations; or other changes in circumstances. New risks and uncertainties arise over time, and it is not possible for Ports America to predict those events or how they may affect Ports America. We cannot assess the impact of each factor on our business or the extent to which any factor, or combination of factors, may contribute to the difference between actual results from those contained in any forward-looking statements. The standards of measurement and performance referenced in this report are developing and based on assumptions, and no assurance can be given that any plan, initiative, projection, goal, commitment, expectation, or prospect set forth in this report can or will be achieved.”

Ports America undertakes no obligation to update or revise any forward-looking statement, whether as a result of new information, future events, or otherwise, except as may be required by law.

## Contents

|   |           |
|---|-----------|
| <i>Purpose of this report</i> .....                         | 1         |
| <i>Legal Disclaimer</i> .....                               | 1         |
| <b>Introduction</b> .....                                   | <b>3</b>  |
| Statement from the CEO .....                                | 3         |
| Statement from the SVP Health Safety & Sustainability ..... | 4         |
| <b>Sustainability at Ports America</b> .....                | <b>5</b>  |
| Company Overview .....                                      | 6         |
| Introduction .....  | 6         |
| Guiding Principles .....                                    | 6         |
| Our Approach to Sustainability .....                        | 7         |
| Service .....   | 7         |
| People and Communities .....                                | 7         |
| Environment .....   | 7         |
| Corporate Governance .....                                  | 7         |
| Our Sustainability Strategy .....                           | 9         |
| Overview .....  | 9         |
| Materiality Assessment .....                                | 9         |
| <b>2023 Sustainability Highlights</b> .....                 | <b>10</b> |
| Key Accomplishments in 2023 .....                           | 11        |
| Safety .....  | 12        |
| Environment .....   | 12        |
| Decarbonization .....                                       | 13        |
| Corporate Social Responsibility (CSR) .....                 | 14        |
| Certifying Entities and Results .....                       | 16        |
| Green Marine .....  | 16        |
| GRESB .....   | 16        |
| <b>Our Path Forward</b> .....                               | <b>18</b> |
| Our Priorities for 2024 .....                               | 19        |
| Stay Up to Date .....                                       | 20        |
| <b>Supplementary Information</b> .....                      | <b>21</b> |
| Emissions Information and Results .....                     | 22        |
| Ports America Emissions Overview .....                      | 22        |
| Ports America Emissions Baseline and Methodology .....      | 22        |
| Ports America 2023 Emissions Data and Results .....         | 24        |

## Introduction

### Statement from the CEO

I am pleased to present the inaugural Sustainability Action Report for Ports America. We have made significant strides in our commitment to safety, sustainability and environmental stewardship, reflecting our dedication to foster a more resilient, efficient and sustainable future for our company, customers, partners and the communities we serve.

Our 2023 strategic initiatives focused on improving our safety performance, reducing our carbon footprint, and continuing engagement in our communities. For example, we have implemented a range of projects aimed at minimizing our environmental impact, including the continued development of our decarbonization roadmap, creating our Scope 1 GHG emission baseline, identifying energy efficiency improvements, assessing energy requirements for greener equipment by port location, and continuing to adopt renewable energy sources at various locations. These efforts are integral to our long-term ambition of lowering our emissions and promoting a circular economy.

We recognize that our success is closely tied to the well-being of our employees, customers, and the communities in which we operate. Thus, we have continued to prioritize safety, diversity, and inclusion within our workforce. Our community outreach initiatives have been instrumental in our aim to build strong, collaborative relationships that drive positive social impact.

As we move forward, we remain committed to transparent reporting and continuous improvement. We are dedicated to setting ambitious sustainability goals and holding ourselves accountable to the highest standards. I want to extend my gratitude to our dedicated team members, partners, and stakeholders for their unwavering support and contributions to our sustainability journey.

Together, we will continue to drive progress and create a more sustainable future for Ports America and the global logistics industry.

Sincerely,

Matthew Leech  
CEO, Ports America



## Statement from the SVP Health Safety & Sustainability

We are committed to embedding sustainability into every facet of our business, from our corporate strategy to our daily operations. Our inaugural Sustainability Action Report aims to provide our key stakeholders with a preview of our sustainability journey.

In 2023, we have made significant strides in various areas of sustainability. As we move forward, we remain dedicated to continuous improvement, in collaboration with our industry and key stakeholders. For example, in 2024, we aim to complete the development of our Sustainability Strategy, underpinned by a robust materiality assessment that will be updated on a regular basis. This effort will guide Ports America in addressing the most pressing sustainability challenges and opportunities.

We understand that our success in these endeavors depends on the collective efforts of our employees, partners, and stakeholders. I would like to extend my heartfelt gratitude to all of you for your unwavering support and collaboration.

Together, we are making meaningful progress towards a more sustainable future, and I am confident that, with your continued trust and partnership, we will achieve our ambitious goals.

Thank you for your continued trust and partnership.

Sincerely,

Tim Puyleart  
SVP HS&S, Ports America



### Environmental Team:



Dr. Sharifa Batts  
Head of Environment and Sustainability



Kelli Hardesty, PG  
Environment & Sustainability Manager

# Sustainability at Ports America

### Company Overview

#### Introduction

Ports America is a premier diversified ports and logistics solutions provider, powered by our people, delivering innovative all-in solutions in a safe and sustainable environment. Ports America has strong relationships with various industry stakeholders across all cargo types on all three U.S coasts.

With a highly skilled and trained labor force, Ports America has the expertise to manage all types of cargo. Ports America's terminal operations and stevedoring services include container, bulk, breakbulk and project cargo; world-class cruise terminals; intermodal facilities; and quality Roll-on/Roll-off (Ro-Ro) operations.

We provide clients with a distinct competitive advantage, combining the flexibility of global connection with the efficiency of local expertise. We are dedicated to customer satisfaction, consistently delivering measurable results. And our commitment to safety in the workplace is second to none.

#### Guiding Principles

Ports America provides creative and innovative infrastructure solutions for ports, cargo carriers and cargo owners. As an organization we are driven by three overarching principles that define who we are and guide our actions as we navigate challenges, pursue opportunities, and drive sustained success.

- **High Performance** - which we define as a commitment to safety
- **Integrity** - in exhibiting the highest ethical standards
- **Partnership** - in fostering connections, acting as one team

Our principles and values create the foundation to implement our organizations strategy through six (6) strategic pillars: asset optimization; growth model transformation; competitive positioning; technology leadership; people, culture, and alignment; and sustainability.

### Our Approach to Sustainability

Ports America's initiative to incorporate Environmental, Social, and Governance (ESG) principles into our strategy and operating framework will help us achieve our longstanding ambition to be a world-class logistics operator that recognizes that sustainability is the foundation to support a meaningful future for our people, customers, and environment. We believe that sustainability is a continuous process of aligning our strategy and operations with sustainable practices. Our Sustainability and Corporate Responsibility approach is structured around four key areas: Service, People and Communities, Environment, and Corporate Governance

#### Service

Ports America operates in every major port in the nation. With more than 100 years of experience, Ports America has a strong group of skilled personnel, robust training programs, best-in class technology and experienced management. As a company we are committed to the following principles:

- Provide the highest quality customer experience in our industry.
- Create long-term value for our customers and stakeholders.
- Provide an excellent and safe work environment.

#### People and Communities

A mutually beneficial working environment enables companies to maintain a talent pool that possesses the dedication, skills, and expertise that are needed to advance our business goals and objectives. Ports America supports the wellbeing of our employees by offering competitive compensation packages, recognition programs, and ongoing professional development opportunities. We are equally committed to fulfilling what we view as our civic responsibility to contribute to the communities where our employees live and work through local initiatives, investment activities, and corporate engagement.

#### Environment

Ports America is conscious of the pressing global climate crisis and seeks to minimize the environmental impacts of our business by promoting sustainable environmental practices across all our operations.

Ports America established our CLEAN PORTS program to heighten awareness of our initiatives to improve waste, pollution, energy, and community engagement in support of regional initiatives as part of the Environmental Management System (EMS).

Ports America understands that our approach to sustainability will continue to progress and mature. We are committed to participating in open dialogue with our employees, customers, industry groups, and other relevant parties as we strive to meet their expectations and hold true to our values as good stewards of the environment.

#### Corporate Governance

Governance is fundamental to our sustainability efforts. Ports America is held to the highest standards by our Board of Directors and our stakeholders, and our commitment to governance is evident in our policies and practices that are maintained with the support of our senior and executive leadership. The Ports America Business Ethics Code of Conduct requires all directors, officers, employees, contractors, agents of Ports America and its subsidiaries and affiliated companies to act with integrity and adhere to the law, operate ethically, and comply with all applicable policies and procedures. Ports America is committed to the highest compliance with all applicable laws, rules, and regulations and to prevent and correct violations wherever they may occur in the organization.



**Sustainability Oversight and Responsibilities at Ports America Group:**

| Level                   | Oversight Mechanism  | Responsibilities  |
|-------------------------|--|---|
| <b>Board Level</b>      | Safety & Operations Committee  | Collaborate with management to develop, and recommend to the Board for approval, a robust, commercially focused operations improvement strategy, including a roadmap for: <ul style="list-style-type: none"> <li>a) Digital and technological innovation</li> <li>b) Resources and capabilities needed for such improvements</li> </ul> |
| <b>Management Level</b> | SVP Environment & Sustainability   | Make sure adequate human, training, technological, and financial resources are available to design and implement our Environmental Management System (EMS)  |
|                         | Head of Environment & Sustainability and Environment & Sustainability Manager(s) | Establish EMS requirements and assist in the continual improvement of the EMS as defined in the EMS manual  |
|                         | Safety Managers  | Implement and maintain EMS requirements   |

**Sustainability-Related Policies**

| Material Topics           | Policies   |
|---------------------------|--|
| <b>Safety</b>             | SAFE PORTS   |
|                           | HSE Policy   |
| <b>Environment</b>        | Environmental Management System (EMS)                        |
|                           | CLEAN PORTS  |
|                           | ESG Policy   |
| <b>People Development</b> | Nondiscrimination, Anti-Harassment and Retaliation           |
|                           | Equal Employment Opportunity (EEO)                           |
|                           | Our Commitment to Diversity, Equity, Inclusion and Belonging |

## Our Sustainability Strategy

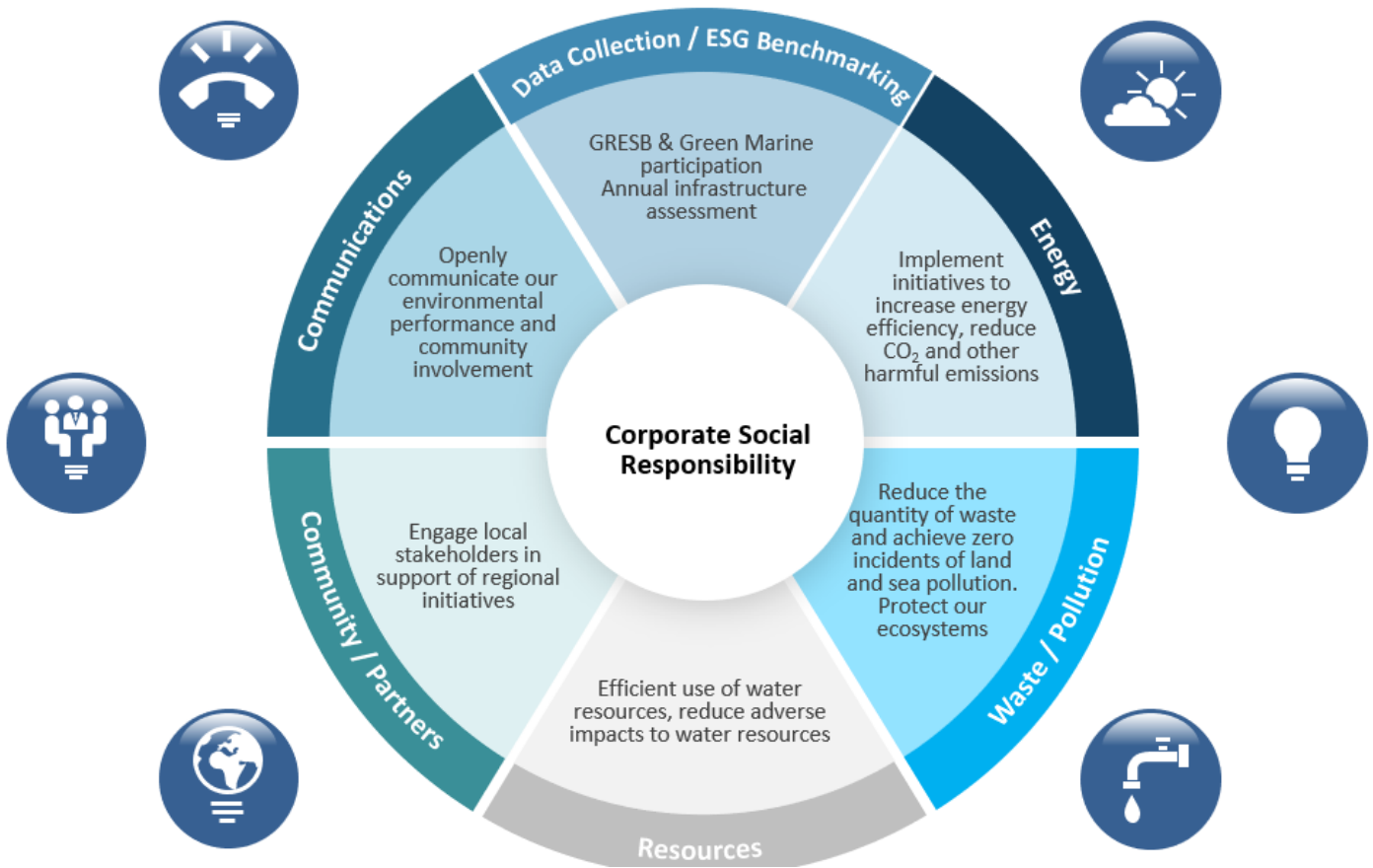
### Overview

Ports America is currently developing a multi-year Sustainability Strategy, underpinned by a materiality assessment that has engaged key stakeholders, from customers to investors and port authorities. This comprehensive approach ensures that we are aligning our sustainability initiatives with the expectations and needs of our stakeholders, and will enable us to set clear, actionable goals and track our progress effectively.

### Materiality Assessment

Our Sustainability approach is rooted in the financial materiality of sustainability risks and opportunities. The findings from our ongoing materiality assessment will be disclosed in our next report and we plan to update this assessment to ensure we are consistently addressing the most financially impactful sustainability risks and opportunities. Our commitment to transparency and continuous improvement remains steadfast, and we look forward to providing more detailed and comprehensive overview of our Sustainability Strategy in our next report.

**Safety Saves Lives. Quality Saves Jobs. Environmental Sustainability Saves our Future**



2023

Sustainability

Highlights

# Key Accomplishments in 2023

## *By the numbers...*

### Sustainability Strategy & Policies

**4**

Key stakeholder groups engaged in our materiality assessment

**13**

Port authorities engaged in discussions concerning our Sustainability Strategy and Policies

### Occupational Health & Safety

**2.50**

Loss Time Incident Frequency Rate (LTIFR)

**4.40**

Total Recordable Incident Rate (TRIR)

### Carbon Footprint

**\$20.4m**

Low-Carbon Equipment Purchased

**99 tCO<sub>2</sub>e**

Reduced Emissions per Low-Carbon Equipment Purchase<sup>1</sup>

### Employee & Community Engagement

**84%**

Employees engaged in our first employee engagement survey

**\$125K+ Donations & 30+ Community Engagements**

Community engagement initiatives across all Ports

### Safety

Ports America is committed to providing a safe environment at every facility. In 2023, Ports America expanded on the safety foundations already in place, with a sharpened focus on becoming a learning organization through understanding critical risks and near miss reporting. Additionally, core concepts related to safety were reinforced:

- All incidents and near misses are an opportunity to learn.
- 
- Understanding the “How” is just as important as understanding the “Why”.
- How “Work is Done” matters.
- People can make mistakes, but the reaction is key.
- As leaders, what we do matters.

Our safety management system integrates visible leadership by senior management, written safety standards, exemplary environmental procedures, and continuous safety improvements into a single platform/tool. And our innovative SAFE PORTS program (Safe Actions for Everyone—Practice, Observe, Remember, Think, Safety) reinforces the aforementioned core safety concepts.

In 2023, Ports America worked to build the capabilities of our Safety Team, adding safety managers in Tampa, Charleston, Newark and Tacoma, along with a data analyst to drive safety-related data integrity. Additionally, Ports America brought on a Senior Manager of Environment and Sustainability to foster initiatives relating to environmental compliance and accelerate our sustainability efforts.

### Environment

Environmental sustainability is a commercial imperative. Ports America is conscious of global climate conditions and is committed to minimizing the environmental impacts of our business by promoting energy efficiency across all our operations. Ports America participates with GRESB and is increasing the number of Green Marine Certifications for our terminals every year. We have also implemented various sustainability measures throughout our locations, including solar energy systems, zero-emission equipment, recycling and waste sorting programs, water filtration systems, LED lighting, and other energy-saving initiatives. Ports America’s environmental initiatives include:

- Maintaining the ESG Policy and CLEAN PORTS program to monitor, control, and evaluate the impact of our operations on the environment;
  - Elements of the CLEAN PORTS program include: Management, Energy, Waste, Pollution, Resources, Partners, Community, & Communication.
- Maintaining environmental objectives, setting targets and putting programs in place to reinforce continual improvement in environment protection, conservation, and pollution prevention;
- Periodically reviewing our environmental performance against the aforementioned established objectives and targets;
- Complying with environmental legislation and regulations, and other requirements that are related to company operations and social responsibility;
- Reducing energy consumption and resource usage by recycling and reprocessing; and
- Training and educating employees to ensure that they are able to implement and maintain the Environmental Management System (EMS), which presents the environmental policy, structure of the management system, and related environment and sustainability documents. The EMS aligns with ISO 14001.

## Decarbonization

Ports America’s emission reduction efforts is driven by our belief that lowering emissions will enable Ports America to provide a more resilient and efficient offering to customers and partners, while supporting the broader decarbonization of the global logistics supply chain. Climate impacts are affecting the local and global communities and the environment now, underscoring the importance that Ports America is capturing on the opportunities to effectively reduce emissions in-line with our global transition to a low-carbon economy.

Decarbonization is not only an industry focus, but also a top priority at Ports America. An initial assessment of the company’s impact and influence on Scope 1 and 2 Greenhouse Gas (GHG) emissions was performed in 2023. Based on this preliminary evaluation, Ports America was able to identify sites and equipment that could significantly reduce our carbon footprint through retiring fuel combustion equipment that are near their end of useful life and replacing them with more sustainable equipment (e.g., propane, hybrid, electric). Infrastructure for each piece of more sustainable equipment would be required and is taken into consideration in the planning process. Such changes will require multi-year financial investment for equipment and funding through government grants for infrastructure.

The illustration below depicts six elements to support Ports America’s Decarbonization ambition for continual reduction of carbon emissions. We will measure progress by focusing on the following elements outlined below: monitoring and reporting, employee engagement and training, innovation and research, and evaluating Science-Based targets.

**Monitoring and Reporting** – Implement a robust monitoring system to regularly track and report carbon emissions. This data can be used to set targets, measure progress, and identify additional areas for improvement. PA is performing a materiality assessment in Q1.

**Employee Engagement and Training** – Educate and involve employees and stakeholders in carbon reduction initiatives. Training programs can promote energy-conscious behaviors and ensure the proper use of new, more sustainable equipment.

**Innovation and Research** – Explore emerging technologies. Stay informed about advancements and sustainable practices within the industry.

**Evaluate Science-based targets** – Assess appropriate measurements and be transparent about findings. PA added a Sustainability section to its website.

**3 Renewable Energy** – Evaluate use of on-site renewable energy sources such as solar panels/micro grids to offset traditional energy consumption. Explore partnerships with clean energy providers for sustainable power options.

**2 Electrification Capability Study** – Evaluate and rank (Easy, Medium, Difficult) each of the location’s ability to support additional electric machines and charging systems.

**1 Energy Audit** – Conduct a robust energy audit to identify current carbon emissions and energy usage. Assess the benefits of a sustainability baseline that identify opportunities for shared value creation.

**4 Fuel Switching** – Assess the impact in shifting from conventional fuels to low-carbon or alternative fuels. Evaluate the feasibility of LNG or biofuels.

**5 Carbon Offsetting** – Explore opportunities for carbon offsetting programs to compensate for emissions that are challenging to eliminate.

**6 Sustainability** – Continue to evaluate opportunities that minimize environmental impact, while prioritizing long-term goals of the organization.

## Corporate Social Responsibility (CSR)

Ports America believes Corporate Social Responsibility, and strong engagement with the communities we operate in, is essential for our long-term success. Ports America is committed to providing the highest quality customer service in the industry, creating long-term value for our customers and stakeholders, and providing an excellent and safe work environment. In our business operations, we are committed to the values of sustainability by supporting our employees, managing our impact on the environment, and contributing to our communities.

We are committed to making a positive impact in our local communities. We support the schools, parks, waterways, and coastal areas that comprise our community. Ports America has donated to local nonprofit organizations, and supported internships and workforce development programs, we believe in the power of collaboration to make a positive impact. In 2023, our sites participated in various community service events that focused on environment and sustainability including coastal cleanups, oyster reef restoration, building fences, back-to-school backpack drives, feeding the unhoused community, etc. As #OnePortsAmerica, we are proud to leverage our strengths in logistics and collaborative synergy for the greater good.



**Above:** Coastal clean-ups and oyster reef restoration



Above: Feeding the unhoused



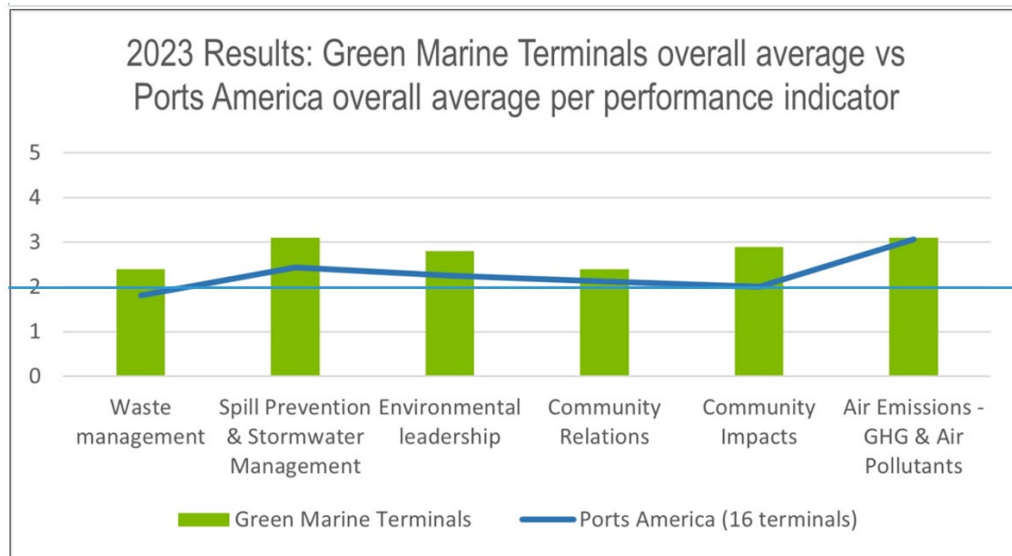
Above: Book and backpack drives



## Certifying Entities and Results

### Green Marine

Ports America had seven (7) sites become Green Marine certified in 2022 and increased participation to 16 sites being Green Marine certified in 2023. To learn more about Green Marine certification, please refer to their website <https://green-marine.org/>.



### GRESB

Ports America completes annual GRESB reporting and will continue to seek to improve broader sustainability performance, and in turn GRESB scores. Ports America received an overall score of 80 in 2023. To learn more about GRESB, please refer to their website <https://www.gresb.com/nl-en/>.



## 2023 GRESB Infrastructure Asset Benchmark Report

Ports America Group, Inc. | Ports America Group, Inc.

GRESB Rating  
★ ★ ☆ ☆ ☆

### Participation & Score



### Peer Comparison



**Nature of Ownership:**  
Private (non-listed)  
entity

**Sector:**  
Container Port

**Location:**  
United States of  
America

# Our Path Forward

# Our Priorities for 2024

*Ports America strives for continual improvement around our sustainability efforts. In 2024, we seek to continue to enhance our approach by accomplishing the following activities:*

## **Sustainability Strategy & Policies**

Complete materiality assessment and develop sustainability strategy, including alignment with SASB

Increase Green Marine certified sites by improving site-level practices

## **Occupational Health & Safety**

Focus on a learning culture by increasing Near Miss Reporting by 20%

Recognizing incidents with a potential high severity as opportunities to proactively make improvements to operations.

## **Carbon Footprint**

Evaluate options to reduce emissions in new equipment purchases across Scope 1 and Scope 2 emissions

Create emissions and waste intensity metrics for benchmarking across port activities

## **Employee & Community Engagement**

Port locations to participate in at least 2 external environmental events

Ports to participate in at least 1 external community event

## Stay Up to Date

We value your feedback. Any questions or comments can be provided using the following e-mail: [sustainability@portsamerica.com](mailto:sustainability@portsamerica.com)

Engage with us on the following social media platforms:

- LinkedIn - <https://www.linkedin.com/company/ports-america/>
- X (formally known as Twitter) - <https://twitter.com/portsamericahq>
- Instagram - <https://www.instagram.com/portsamerica/>
- Facebook - <https://www.facebook.com/PortsAmerica/>
- Website - <https://www.portsamerica.com/>

# Supplementary Information

## Emissions Information and Results

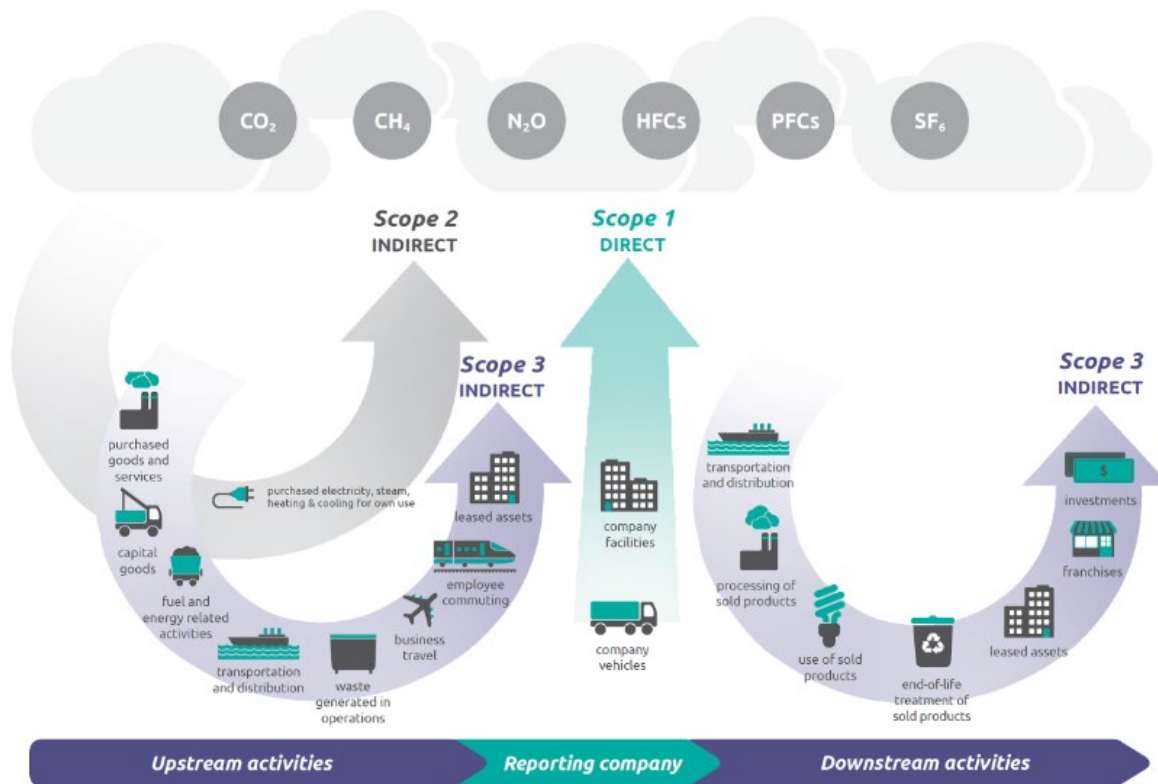
### Ports America Emissions Overview

Ports America endeavors to reduce Scope 1 emissions by electrifying cargo handling equipment. Hydrogen technologies will also be evaluated to determine viability with select equipment. To address total emissions under Scope 2 created by purchased electricity, Ports America must work closely with utility companies to advance more ambitious goals, continuously invest in renewables, and further investigate innovative technologies. Ports America has begun to address Scope 2 by installing solar panels designed to offset electricity consumption from on-site sources.

**Scope 1** - Direct carbon emissions generated by equipment or vehicles owned and operated by Ports America, such as cranes and cargo handling equipment.

**Scope 2** - Indirect carbon emissions from electricity consumption, which includes buildings and electric equipment. This scope largely reflects the renewable content from electrical grids.

**Scope 3** - GHG emissions generated at Ports America sites by sources over which Ports America has little or no control, such as ships, trucks, harbor craft tugs, rail, and third-party vendors. Ports America plans to start the due diligence to quantify its Scope 3 emissions and identify reduction targets in 2026.



Source: [WRI/WBCSD Corporate Value Chain \(Scope 3\) Accounting and Reporting Standard \(PDF\)](#), page 5.

## Ports America Emissions Baseline and Methodology

### Scope 1, 2 and 3 Emissions and Air Pollutants

Scope 1 emissions are direct GHG emissions that occur from sources that are controlled or owned by an organization such as fuel combustion, whereas Scope 2 emissions are indirect GHG emissions associated with the purchase of

## 2023 Sustainability Action Report - Ports America

electricity, steam, heat or cooling and are a result of the organization's energy use. Where Ports America has control and/or influence on emissions for Scopes 1 and 2, those GHG emissions are calculated.

Ports America calculates Scope 1 emissions using the fuels and oils consumed, and Scope 2 emissions using the electricity consumed. The volumes of fuels and oils, reported in gallons, are multiplied by their respective conversion and emission factors, to provide a tCO<sub>2</sub>e (tons of carbon dioxide equivalent) value for Scope 1 emissions. The conversion factors are derived from Energy Star Portfolio Manager Technical Reference (2015) and the emission factors are derived from Q&P (2021).

The electricity consumption at each site is multiplied by their respective grid emission factors, which accounts for the percentage of non-renewable and renewable energy sources that supply the utilities, to provide a tCO<sub>2</sub>e value for Scope 2 emissions. The grid emission factors are derived from the EPA eGrid Summary Tables (2022) which are updated annually.

| <b>Emission Type</b> | <b>Methodology</b>   | <b>Sources</b>  |
|----------------------|--|---|
| <b>Scope 1</b>       |  |   |
| Diesel               | Total diesel usage (gallons)*<br>Conversion of US gallon of diesel to Kwh *Emission Factor   | Diesel Fuel - Ports America records<br>Conversion of gallons to Kwh - Energy Star Portfolio Manager Technical Reference (2015)<br>Emission Factor - Q&P emission factors (2021)   |
| Gasoline             | Total gasoline usage (gallons)*<br>Conversion of US gallon of diesel to Kwh *Emission Factor | Gasoline Fuel - Ports America records<br>Conversion of gallons to Kwh - Energy Star Portfolio Manager Technical Reference (2015)<br>Emission Factor - Q&P emission factors (2021) |
| Propane              | Total propane usage (gallons)*<br>Conversion of US gallon of propane to Kwh *Emission Factor | Propane Fuel - Ports America records<br>Conversion of gallons to Kwh - Energy Star Portfolio Manager Technical Reference (2015)<br>Emission Factor - Q&P emission factors (2021)  |
| <b>Scope 2</b>       |  |   |
| Electricity Use      | Sum of Site Electricity Usage (Kwh)*<br>State-Specific Grid Emission Factor                  | Site Electricity Usage - Ports America records<br>Site-Specific Grid Emission Factor - US EPA eGrid (2022)  |

Due to the nature of Scope 3 emissions (i.e., emissions that are not produced by the company itself and are not a result of activities from assets owned or controlled by them), they are not currently quantified.



## 2023 Sustainability Action Report - Ports America

### Ports America 2023 Emissions Data and Results

Data from diesel and gasoline consumption is also used to calculate air pollutant emissions (e.g., SOX, NOX, PM2.5, etc.). Below is a summary of our Scope 1 and 2 emissions, and air pollutant emissions for 2023 based on data collected from 22 Ports America sites:

| Carbon emissions (tCO <sub>2</sub> e) |                  |   |                  |
|---------------------------------------|------------------|---|------------------|
| Metric                                | 2023             |   |                  |
| Diesel                                | 57,479.61        |   |                  |
| Gasoline                              | 9,429.41         |   |                  |
| HCFC-22                               | 541.86           |   |                  |
| Natural gas                           | 1,828.04         |   |                  |
| Propane                               | 4,660.52         |   |                  |
| Scope 1                               | <b>73,939.45</b> | Scope 1 (excl. HCFC-22)                 | <b>73,398</b>    |
| Scope 2                               | 14,546           | Scope 2 (excl. HCFC-22)                 | 14,546           |
| <b>Total (Scope 1 + 2)</b>            | <b>88,485.73</b> | <b>Total (Scope 1 + 2 excl HCFC-22)</b> | <b>87,943.87</b> |
| Scope 3                               | 0                |   |                  |
| <b>Total (Scope 1 + 2 + 3)</b>        | <b>88,485.73</b> |   |                  |
| Emissions avoided                     | 2,251            |   |                  |
| On-site offsets                       | 422              |   |                  |
| Offsets purchases                     | 0                |   |                  |
| <b>Net GHG emissions</b>              | <b>88,064.18</b> |   |                  |

| Air pollutant emissions - kg | 2023    |          |         |         |
|------------------------------|---------|----------|---------|---------|
|                              | Diesel  | Gasoline | HCFC-22 | Total   |
| SOX                          | 669     | 88       |         | 757     |
| NOX                          | 406,306 | 1,032    |         | 407,338 |
| PM2.5                        | 20,330  | 147      |         | 20,478  |
| PM10                         | 20,330  | 147      |         | 20,478  |
| ODS                          |         |          | 299     | 299     |
| Lead                         |         |          |         | 0       |
| Mercury                      |         |          |         | 0       |
| Other: VOC                   | 79,181  |          |         | 79,181  |